



IMPROVES WORKFLOW FOR BREAST BIOPSY SPECIMEN HANDLING

GRID-VIEW® was developed specifically to address inadequacies in the post operative handling of surgical breast biopsy specimens and multiple core biopsy specimens.

It's unique design and radio-opaque grid provide an efficient system for imaging, transporting and identifying breast biopsies. The clamshell design, for example, was chosen to accommodate larger specimens without compromising performance or convenience. GRID-VIEW® will contain specimen fluids.

GRID-VIEW® are available in three grid patterns and can be purchased as a carton of 12 units, or as a case of 12 cartons (144 units).

Benefits

- Reduces surgery time through improved imaging turn-around
- Improves communication between surgery, radiology and pathology
- Eliminates physical handling of specimens in radiology
- Eliminates the need for needles or wires
- Reduces risk of exposure to blood-borne pathogens

US PATENT # 5383472

深圳市展业达鸿科技有限公司

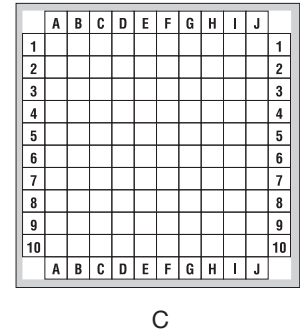
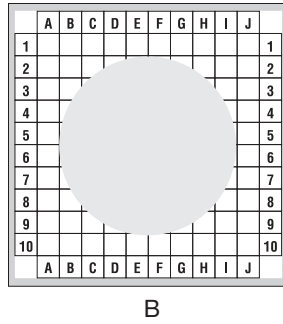
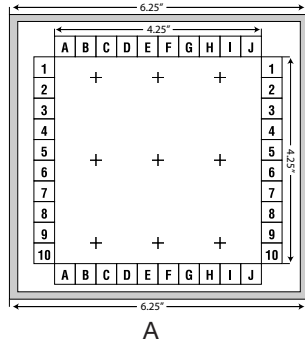
吕先生: 15920060912 (微信同号) 0755-22934005 (座机)

地址: 深圳市福田区八卦二路八卦岭工业区615栋419

邮箱: hongqi@thingstet.com

网址: www.thingstet.com



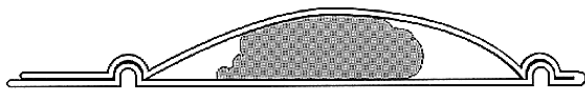


Grid-View can now be purchased in cartons of 12 units or a case quantity of 12 cartons. (144 units)
When Ordering specify CIRS Part Number (i.e. 240A for Carton of 12 units Grid-View "A")

SPECIFICATIONS

DIMENSIONS:	16 cm x 10.8 cm x 10.8 cm (6.25" x 4.25" x 4.25")
PHANTOM WEIGHT:	0.5 lbs. (0.18 kg)
MATERIALS:	Transparent Plastic

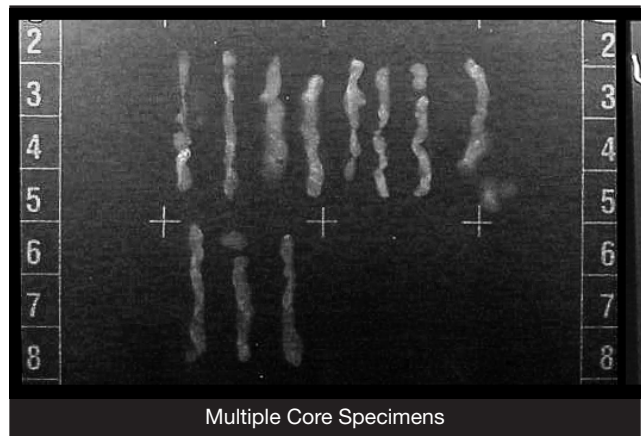
MODEL NO.	DESCRIPTION
240A	Carton of 12 Grid-View "A" Containers
240B	Carton of 12 Grid-View "B" Containers
240C	Carton of 12 Grid-View "C" Containers
242A	Case of 144 Grid-View "A" Containers (12 Cartons)
242B	Case of 144 Grid-View "B" Containers (12 Cartons)
242C	Case of 144 Grid-View "C" Containers (12 Cartons)



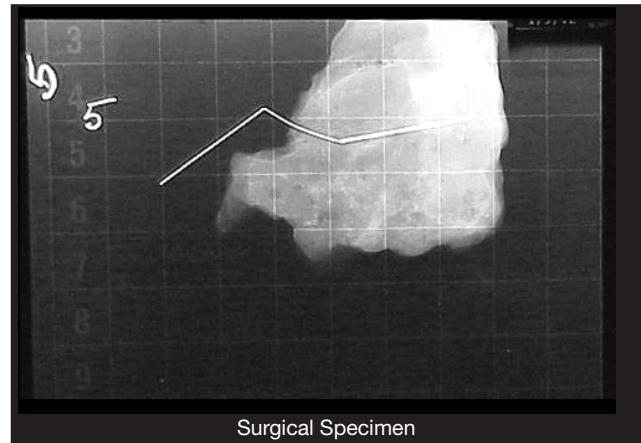
Clam shell design compresses larger specimens for improved image contrast and contains specimen fluids.

EXAMPLE:

1. Biopsy Tissue is placed in GRID-VIEW® container.
2. GRID-VIEW® container is delivered to Radiology for confirmation image.
3. GRID-VIEW® container with biopsy is delivered undisturbed to pathology with the X-ray image.
4. Specimen is compared with x- ray image by pathologist for isolation of suspect tissue or calcifications.



Multiple Core Specimens



Surgical Specimen